

Bos(S)



247 Station Drive, SE270
Westwood, MA 02090

October 11, 2017

Dear Neighbor,

As part of our everyday effort to deliver reliable energy and superior service to our customers and communities, we have scheduled work to improve the transmission system in Walpole, Sharon, Canton, Avon, Stoughton, Randolph, and Holbrook, Massachusetts.

In September 2017, Eversource received approval from the Massachusetts Energy Facilities Siting Board to construct the Walpole to Holbrook Reliability Project. This project is one of a suite of projects designed to improve the reliability of the electric system serving the Greater Boston and surrounding areas, both today and in the future.

Work in Your Neighborhood

Since your property is located on or near the project right-of-way (power line corridor), we want to make sure you are informed of our work. The project includes the construction of a new overhead 115-kV transmission line on an existing Eversource right-of-way for 14.7 miles, between the West Walpole Substation in Walpole to the Holbrook Substation in Holbrook. This will involve hanging the new line on existing structures between the Walpole and Holbrook Station, and the construction of new structures between West Walpole and Walpole stations. The project also includes installing a new switching station in Sharon and modifications to the existing substations in Walpole and Holbrook.

What You Can Expect

First, we want you to know that this work will not interrupt electric service to your property, and that all people working on this project carry identification.

Start of construction is designed to occur in phases.

The first phase is the right-of-way clearing which is expected to take place mid- October 2017. Trees and brush will be cleared in the right of way in certain sections to provide access for construction equipment and a safe work area for crews. This clearing is needed for the structure replacement work as well as the safe and reliable operation of the power lines.

The second phase is project construction which is expected to take place in late October 2017, pending all necessary approvals, with the construction of the line in Walpole and the start of construction on the new switching station in Sharon. The project is expected to be completed in the second quarter of 2019, with restoration finished by the summer of 2019.

Hours of construction will typically be 7 a.m. - 6 p.m., Monday - Friday, and 9 a.m. - 5 p.m. Saturdays. Due to unexpected weather or other circumstances, the work hours may be extended or performed on a Sunday. Before work begins in your neighborhood, our Field Outreach representatives will notify you with details about planned work and its timing.

Our Commitment to You

We are committed to being a good neighbor and doing our work with respect for you and your property. If you have questions about this project, please call the Eversource Transmission Information Line at 1-800-793-2202 or email us at TransmissionInfo@eversource.com

Thank you in advance for your patience as we work to improve electric reliability for all customers.

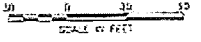
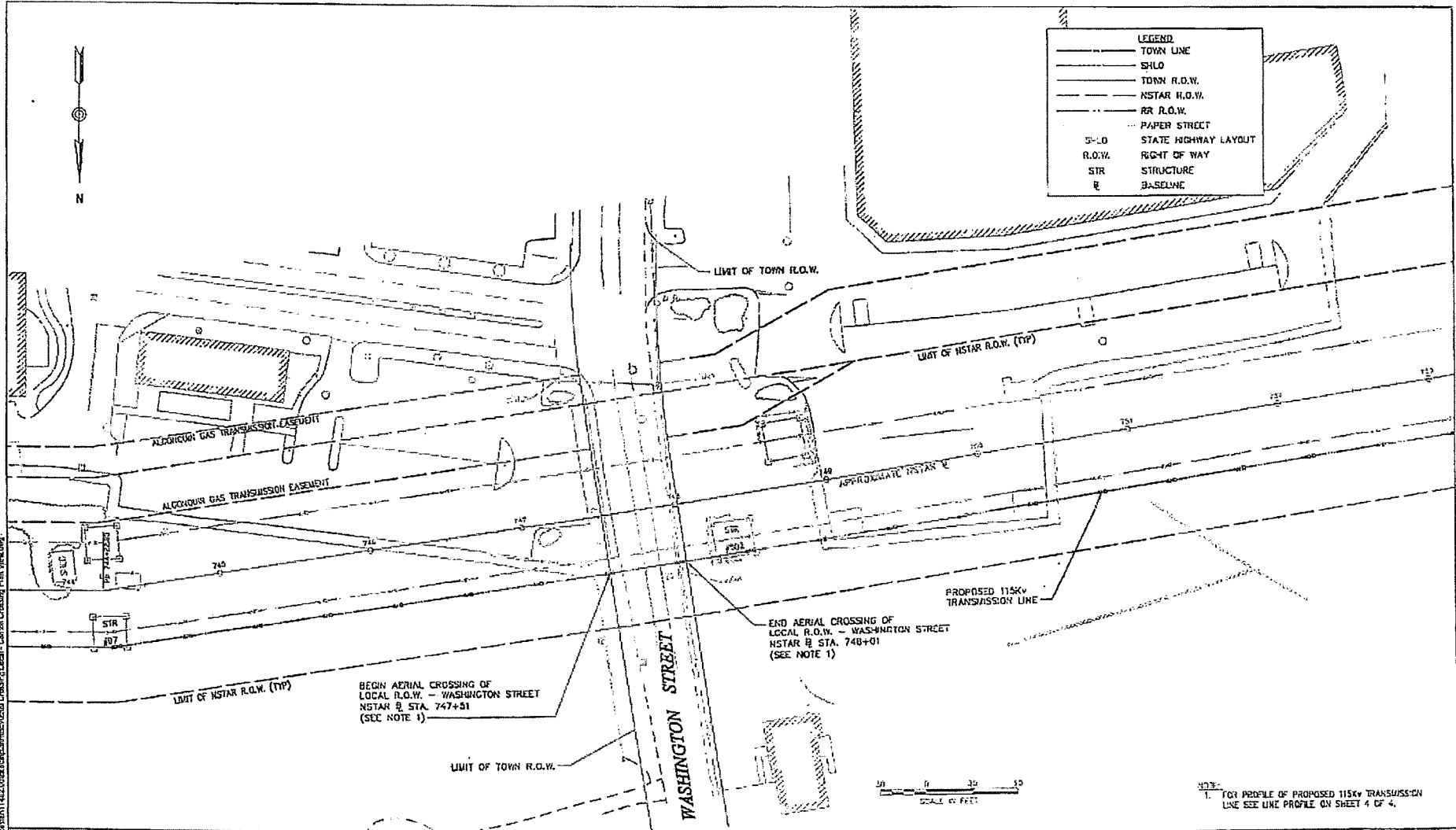
Sincerely,

A handwritten signature in blue ink that reads "Chris Rodstrom". The signature is stylized and fluid, with a long horizontal stroke at the end.

Christopher Rodstrom
Eversource Project Manager



LEGEND	
——	TOWN LINE
——	SHLO
——	TOWN R.O.W.
——	NSTAR R.O.W.
——	RR R.O.W.
---	PAPER STREET
---	STATE HIGHWAY LAYOUT
---	R.O.W.
---	RIGHT OF WAY
---	STR
---	STRUCTURE
---	BASELINE

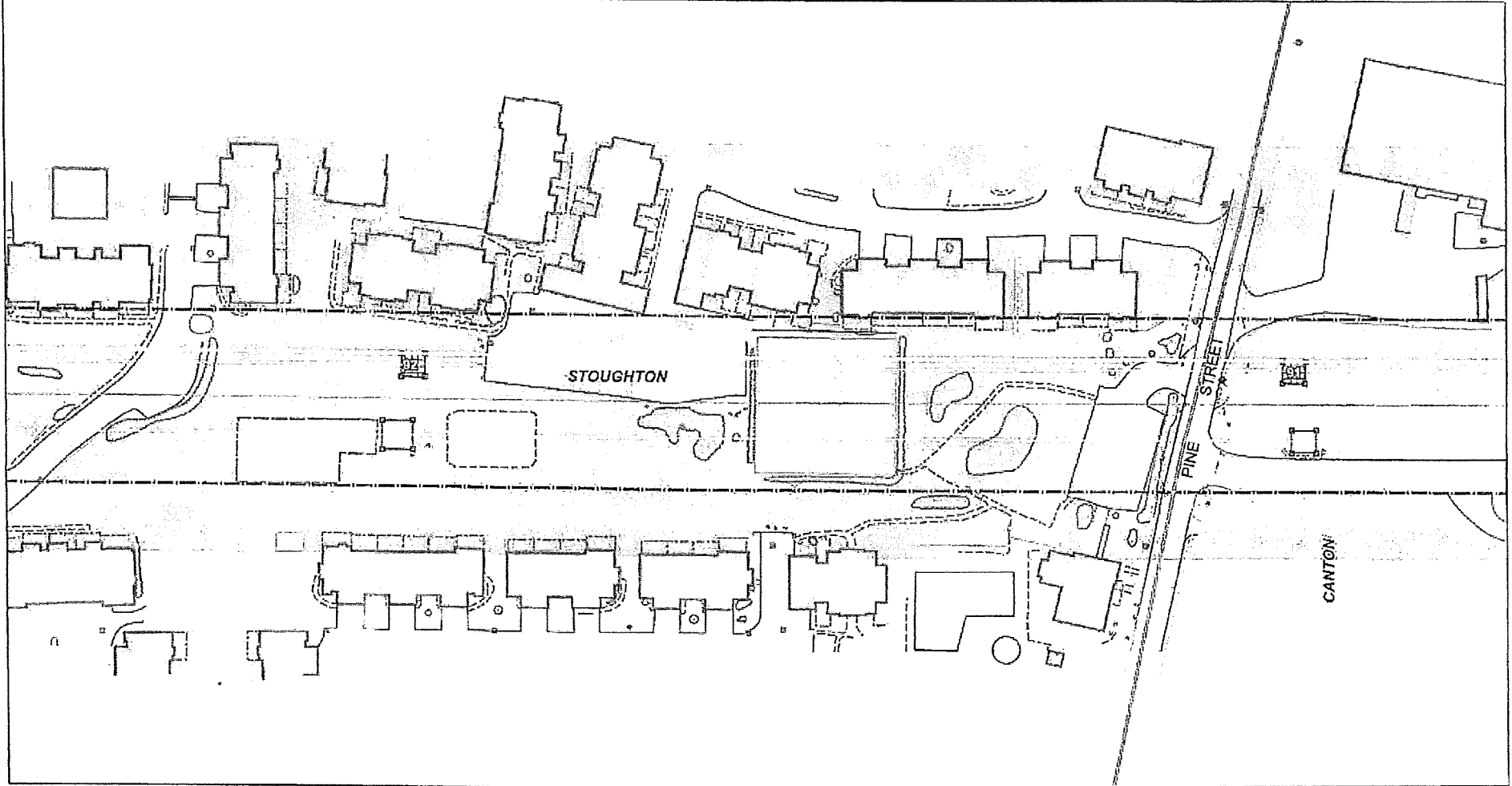


NOTE:
1. FOR PROFILE OF PROPOSED 115KV TRANSMISSION LINE SEE LINE PROFILE ON SHEET 4 OF 4.

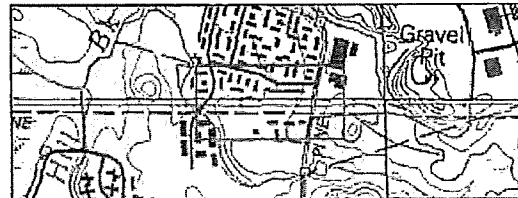
PLOTTED: 10/02/2018 10:23:48 AM
 Path: C:\Users\jgall1\OneDrive\Documents\Local\Drawings\Crossing\Plan View.dwg

1									
2									
3									
4									
5									
6									
7									
8									
9									
10									
11									
12									
13									
14									
15									
16									
17									
18									
19									
20									
21									
22									
23									
24									
25									
26									
27									
28									
29									
30									
31									
32									
33									
34									
35									
36									
37									
38									
39									
40									
41									
42									
43									
44									
45									
46									
47									
48									
49									
50									

EVERSOURCE		WGN RELIABILITY PROJECT		PLAN VIEW	
SECTION DESCRIPTION: LINE 447-482, TOWER TO WEST WALKPOLE		WASHINGTON STREET LOCAL CROSSING - CANTON		PAGE 2 OF 4	
DATE	BY	CHECKED	DATE	BY	CHECKED
N/A	N/A	N/A	N/A	N/A	N/A



- New 116kV Transmission Line
- ▨ WCN Reliability Project Tower Location
- Transmission Structure Replacement/New Structures
- Existing Utility Pole
- ▭ Town Boundaries



EVERSOURCE
ENERGY

Walpole to Holbrook, MA

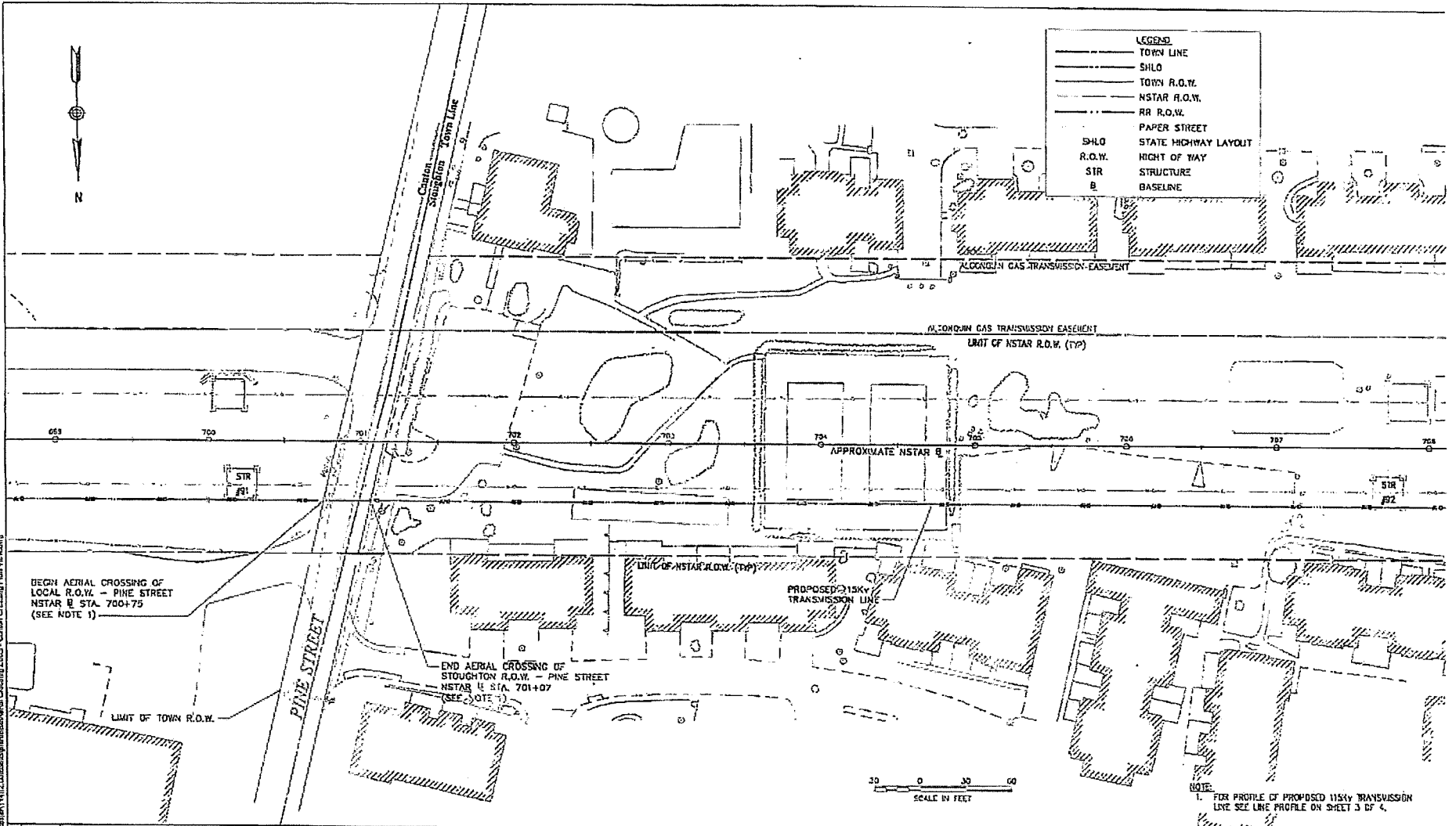
Pine Street, Canton

October 2016





LEGEND	
---	TOWN LINE
---	SHLO
---	TOWN R.O.W.
---	NSTAR R.O.W.
---	RR R.O.W.
---	PAPER STREET
---	SHLO STATE HIGHWAY LAYOUT
---	R.O.W. RIGHT OF WAY
---	STR STRUCTURE
---	B BASELINE



BEGIN AERIAL CROSSING OF LOCAL R.O.W. - PINE STREET NSTAR B STA. 700+79 (SEE NOTE 1)

END AERIAL CROSSING OF STOUGHTON R.O.W. - PINE STREET NSTAR B STA. 701+07 (SEE NOTE 1)



NOTE:
1. FOR PROFILE OF PROPOSED 115KV TRANSMISSION LINE SEE LINE PROFILE ON SHEET 3 OF 4.

PLOTTED 10/22/2016 10:24:41 AM
Subproject: WMA 447-582, WALPOLE TO WEST WALPOLE Crossing of Local - Canton Crossing Plan View.dwg

3									
2									
1									
0									
0	DATE								



EVERSOURCE ENERGY

11/15/2016 N/A 01/24/2016 TR/LSK/SS/CH
6/2/2016 N/A DATE 10/26/2016

WYON RELIABILITY PROJECT
SECTION DESCRIPTION: LINE 447-582, WALPOLE TO WEST WALPOLE
PINE STREET LOCAL CROSSING - CANTON

PROJECT	DATE	SCALE	DATE
PLAN VIEW			