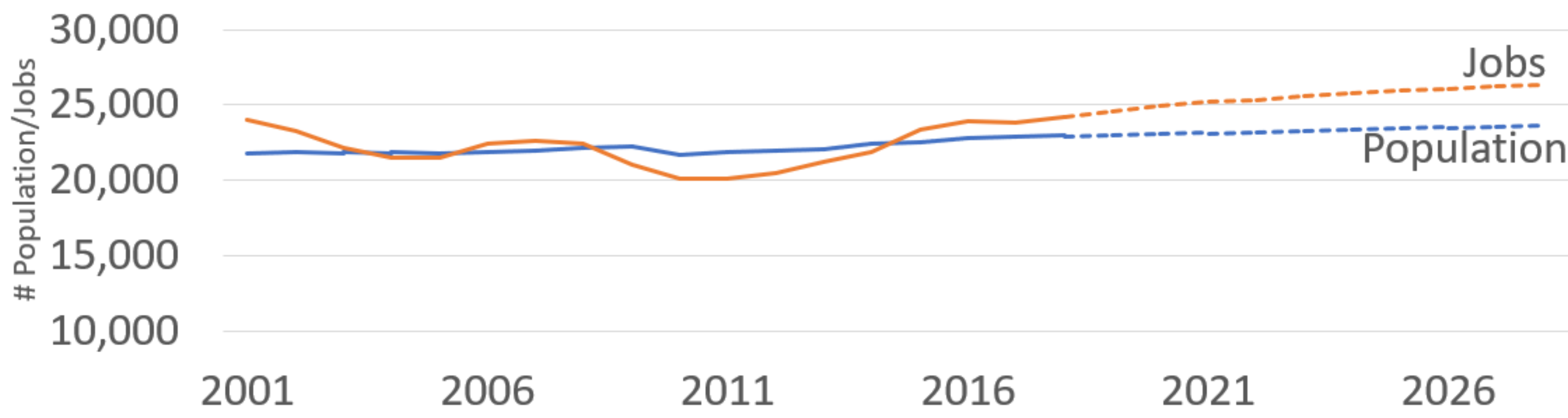


Economic Development

Jobs and Residents in Canton



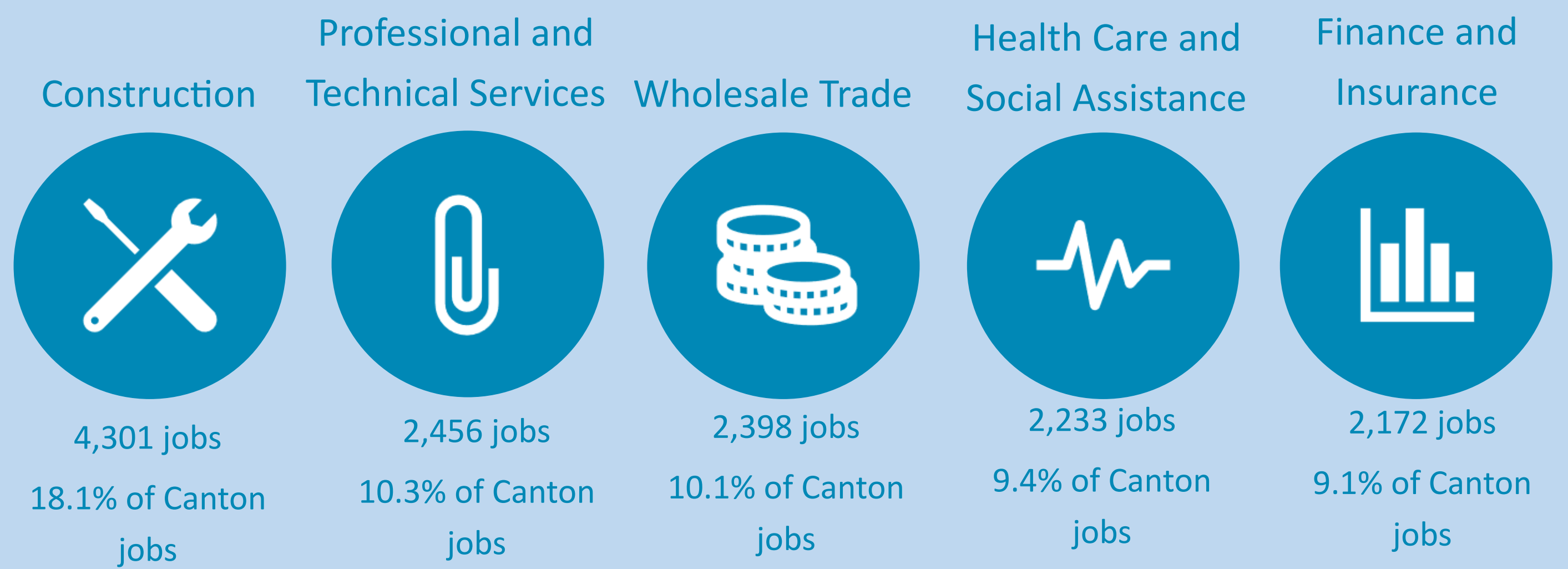
Source: EMSI

What is the Job Outlook?

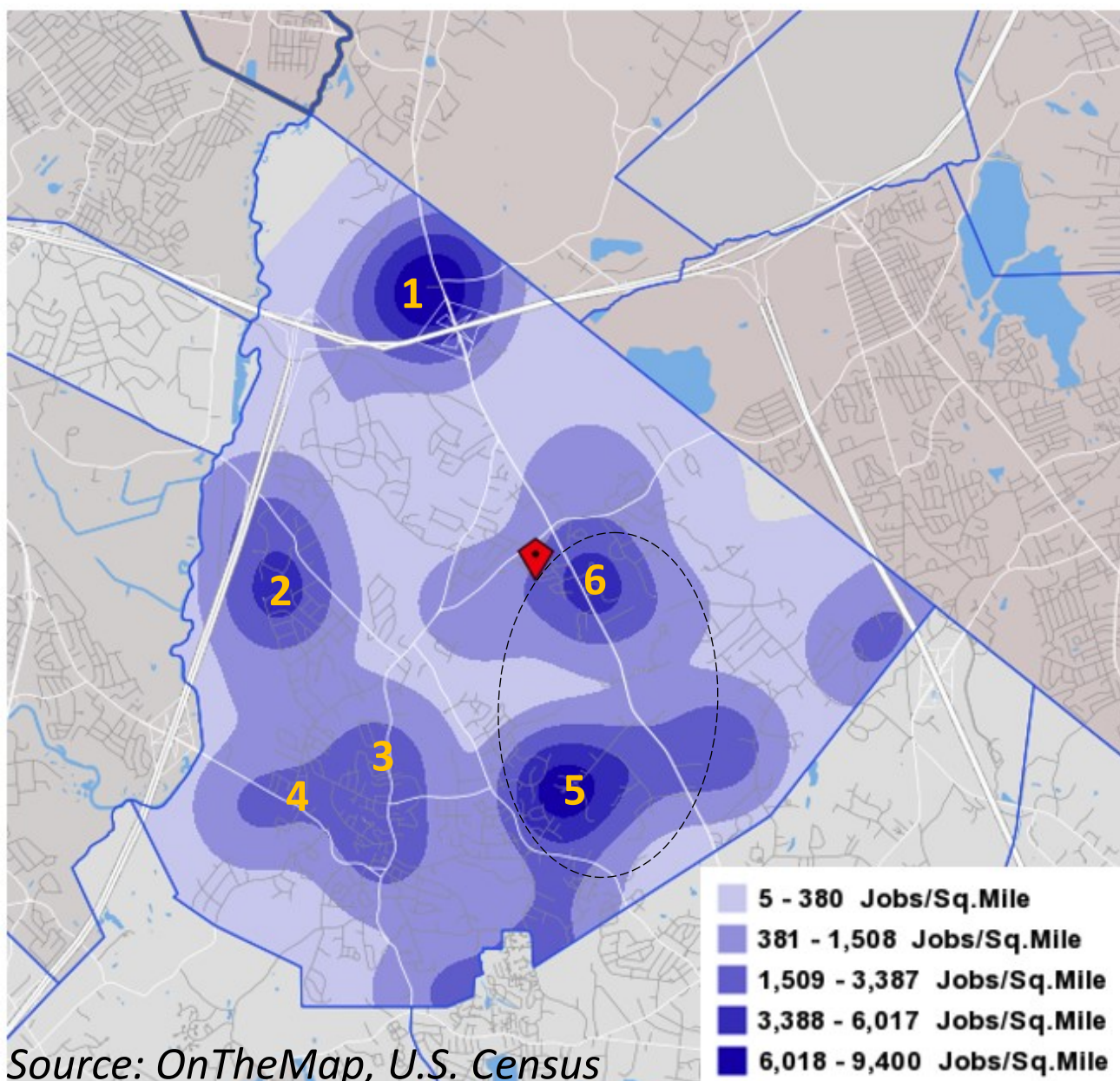
The Town of Canton is projected to continue to have **more jobs than residents**. In 2017 Canton had 1.04 jobs for every resident, compared to 0.61 in the Boston metro area as a whole.

Which Sectors Drive Employment?

Canton's top five sectors account for 53% of jobs in the town. **Construction** provided just over 18% of Canton's jobs in 2017.



Source: EMSI



Source: OnTheMap, U.S. Census

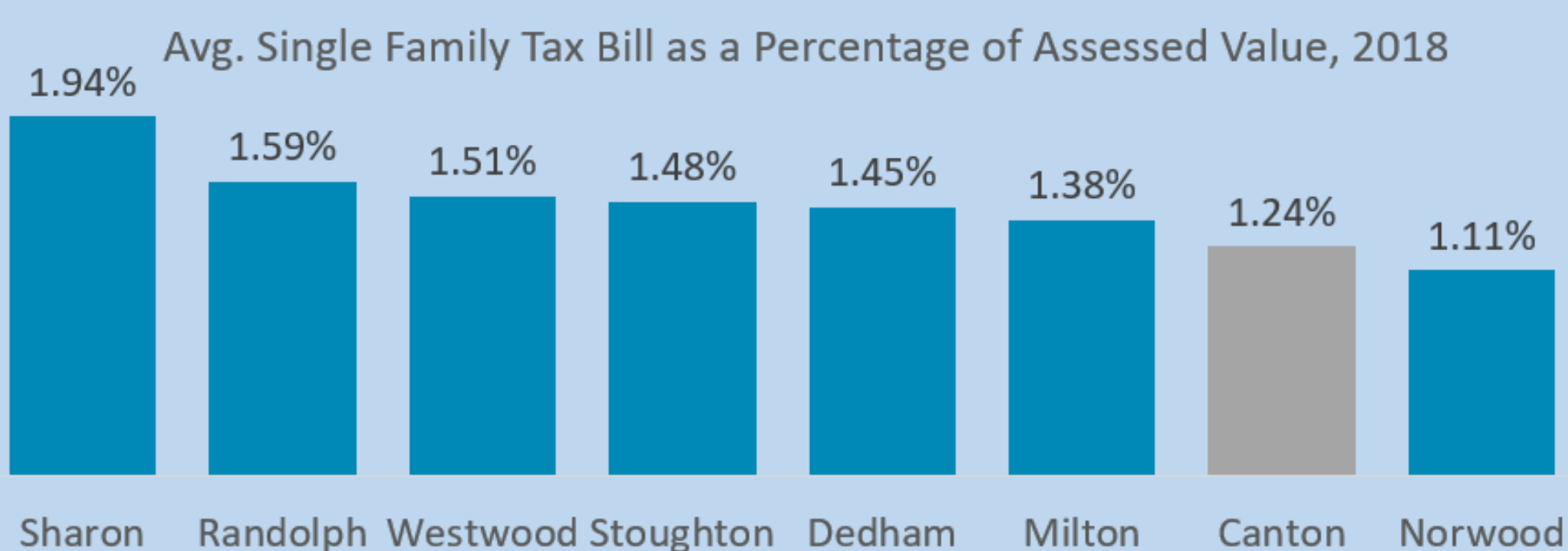
Where are the Major Employment Centers?

Employment in Canton is clustered in **six** major areas:

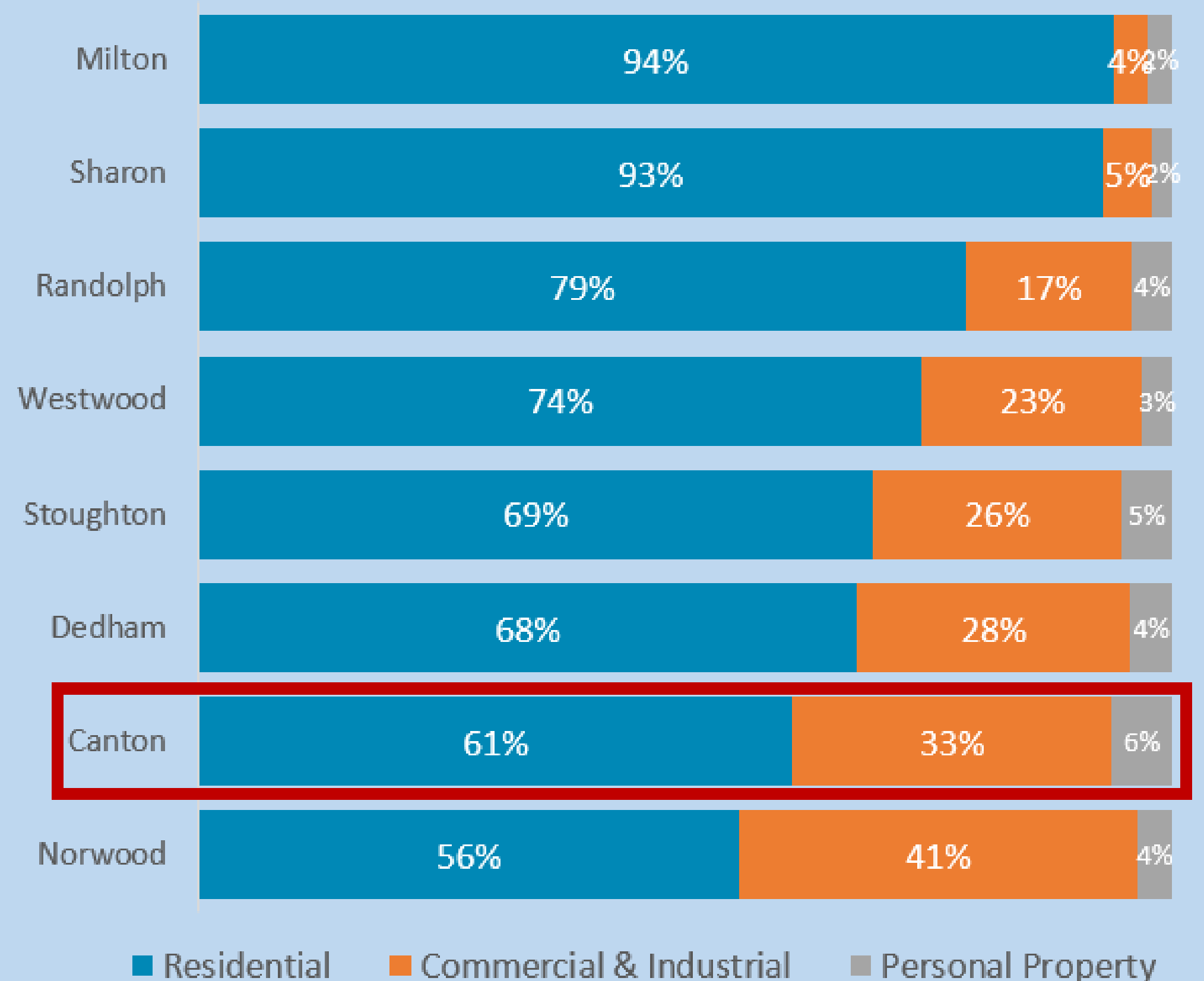
1. I-93 Exit 2
2. Dedham Street/Shawmut Park (Shawmut Road)
3. Canton Center
4. Neponset Street/Canton Junction
5. Rt. 138/Canton Commerce Center (Dan Rd.)
6. Cobb Corner

How Do We Stand on Taxes?

Canton's healthy commercial tax base keeps the **residential tax burden low**. Compared to the surrounding towns, Canton has a large proportion of tax levy stemming from Commercial and Industrial properties. Relative to assessed values, average single family tax bills in Canton are among the lowest.



Property Type Share of Town Tax Levy by Class, 2018



Source: Division of Local Services, MA

